

PILOT NOTES

KEIHEUVEL FLY-IN 2011

Version 6: 24/07/2011¹

Content

1. Airfield Specifications
2. Procedures
3. Communication
4. Aerodrome Information
5. Procedures on ground
6. Special points of attention
7. Charts

1. Airfield Specifications

ICAO ID: EBKH
Time Zone Info: GMT + 1:00
Coordinates: 51° 10' 51.1" N - 05° 13' 14.7" E
Runway: 07 / 25
Surface: Grass
Dimensions: 690m x 18m
Elevation: 131ft / 40m

2. Procedures

Standard circuit 07/25: Left hand
Circuit Altitude: 1000 ft AGL
Reporting points: Downwind, Final

3. Communication

Balen Radio:	119.200 MHz	(AFIS)
Brussels Information:	126.900 MHz	(Civil FIS)
Belga Radar:	129.320 MHz	(Military FIS)
Kleine-Brogel APP:	122.500 MHz	(Neighbouring airspace and Military FIS)
Brussels Volmet:	127.800 MHz	(Meteo information)

¹ Check for final version before departure to the event

4. Aerodrome Information

Opening hours during Fly-In: 10:00 – 18:00 Local Time

No landing fees during Fly-In

AD Prohibited for ULM not equipped with four stroke engine

AD prohibited for motorized delta planes

Pay attention to glider activity: air-tow up to 2000'

Taxi North of Runway

Avoid built-up areas near AD for noise abatement

5. Procedures on Ground

After landing RWY 07: Vacate runway to the left ASAP

After landing RWY 25: taxi straight out to the end of the runway unless otherwise instructed
by AFIS, Follow-Me or Marshaller

When speed under control: Follow instructions of AFIS (119.200 MHz)

Taxi: Follow the Follow-Me car to the Marshaller

Parking: Follow the instructions of the Marshaller to avoid obstacles during ground manoeuvring

Start-up: push back aircraft and start-up avoiding public area with propwash

After start-up Taxi: request taxi-instructions to AFIS (119.200 MHz)

6. Special Points of Attention

Transition Altitude Belgium: 4500ft QNH

P07A: Prohibited airspace at all times

Rad. 2NM around EBBL (Military)

R07A: Restricted airspace: Contact Brussels Information (126.900 MHz) before crossing

Rad. 5NM around EBBL (Military)

P05A,B,C,D: active during Military opening hours

Check status with Brussels Info (126.900 MHz)

TMA and CTR EBBL: active during Military opening hours

Check status with Brussels Info (126.900 MHz)

When EBBL active: contact Kleine Brogel Approach: 122.500 MHz

Check NOTAM's of Belgium Airspace at:

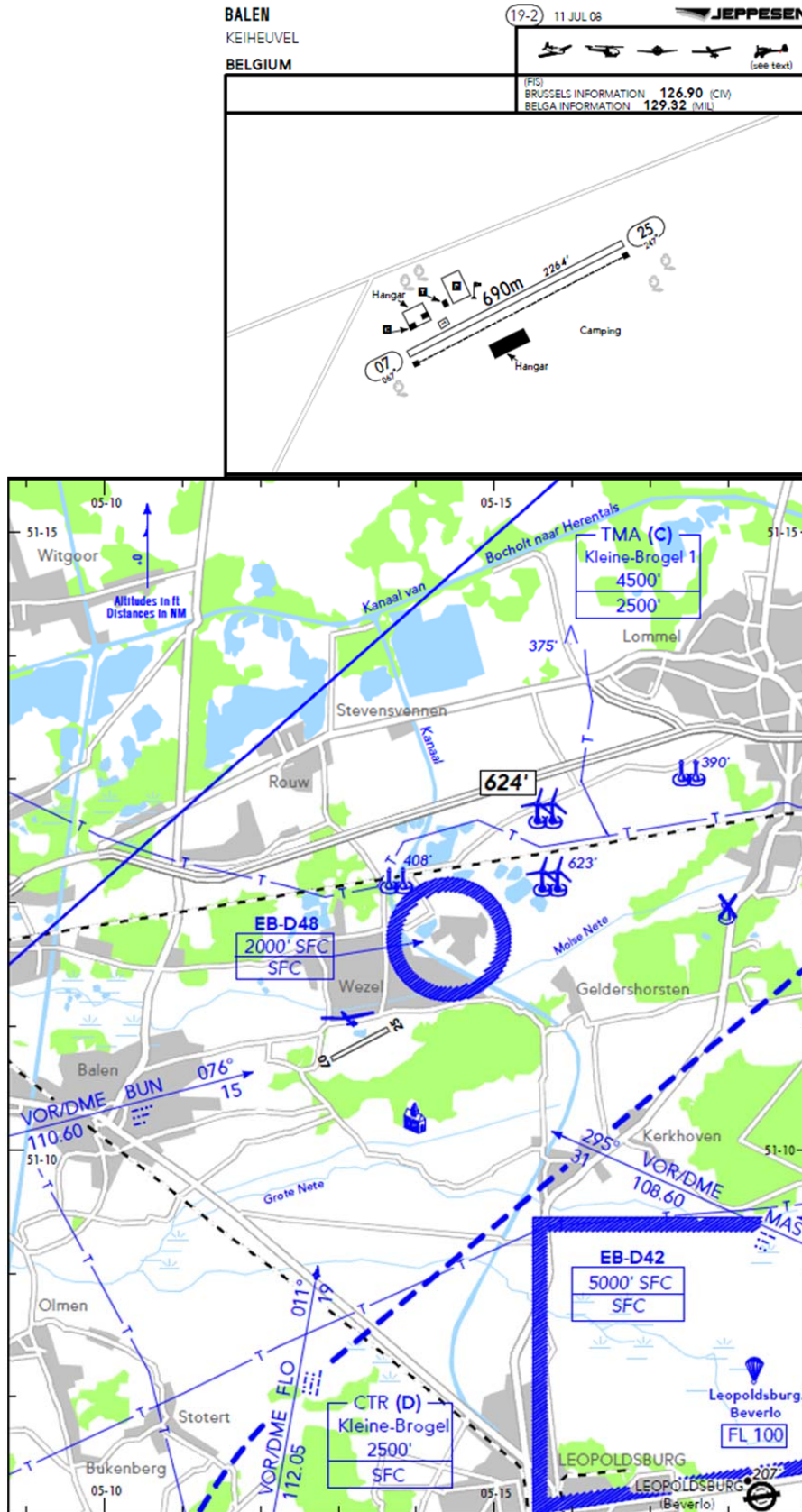
<http://www.belgocontrol.be/belgoweb/publishing.nsf/Content/Operational>

ATTENTION

***Aerobatic Manoeuvres, Overflying the public area, Low pass below 100 ft AGL
prohibited at all times !!!***

7. Charts

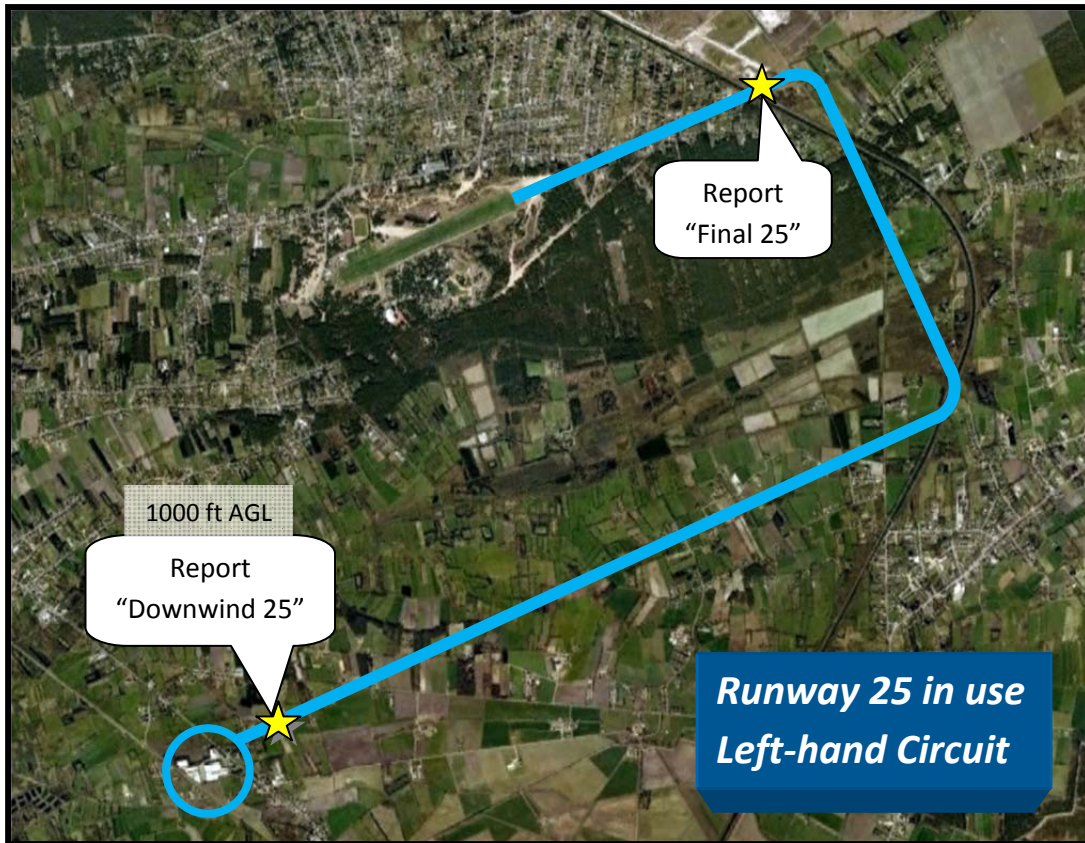
Aerodrome Situation and Location



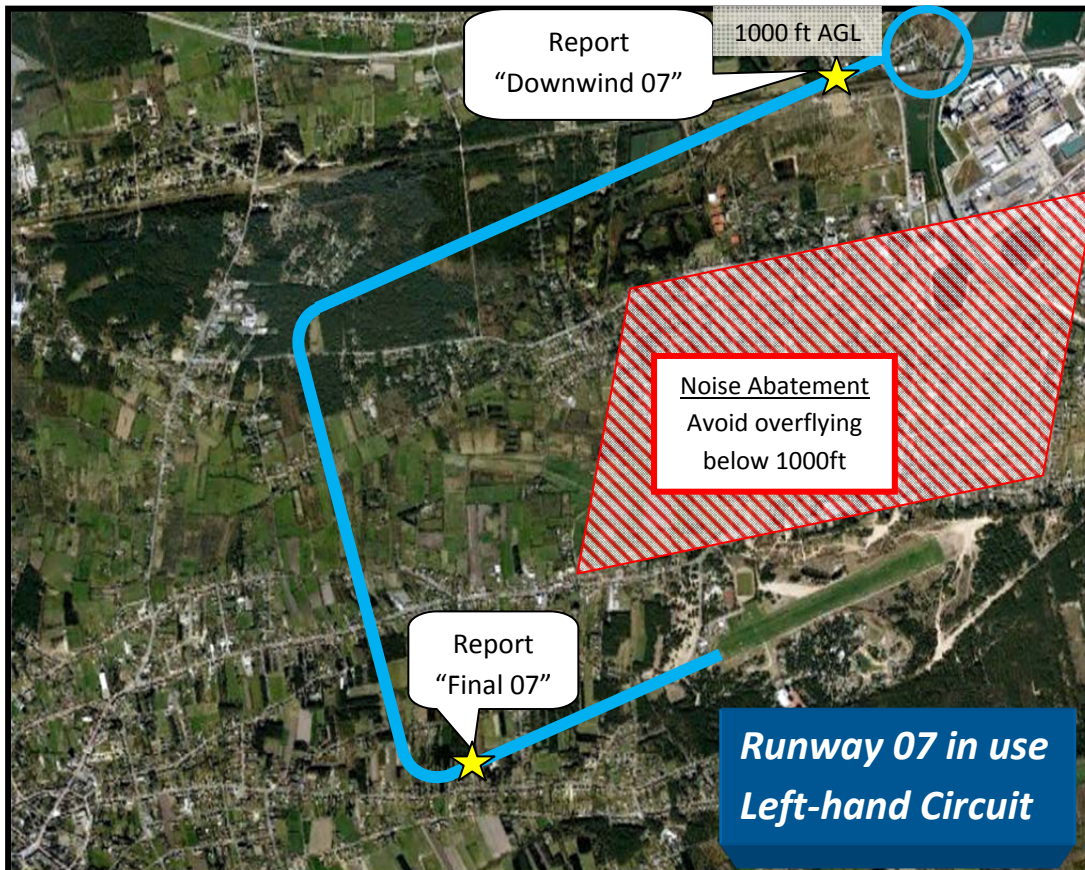
Aerodrome Ground Situation



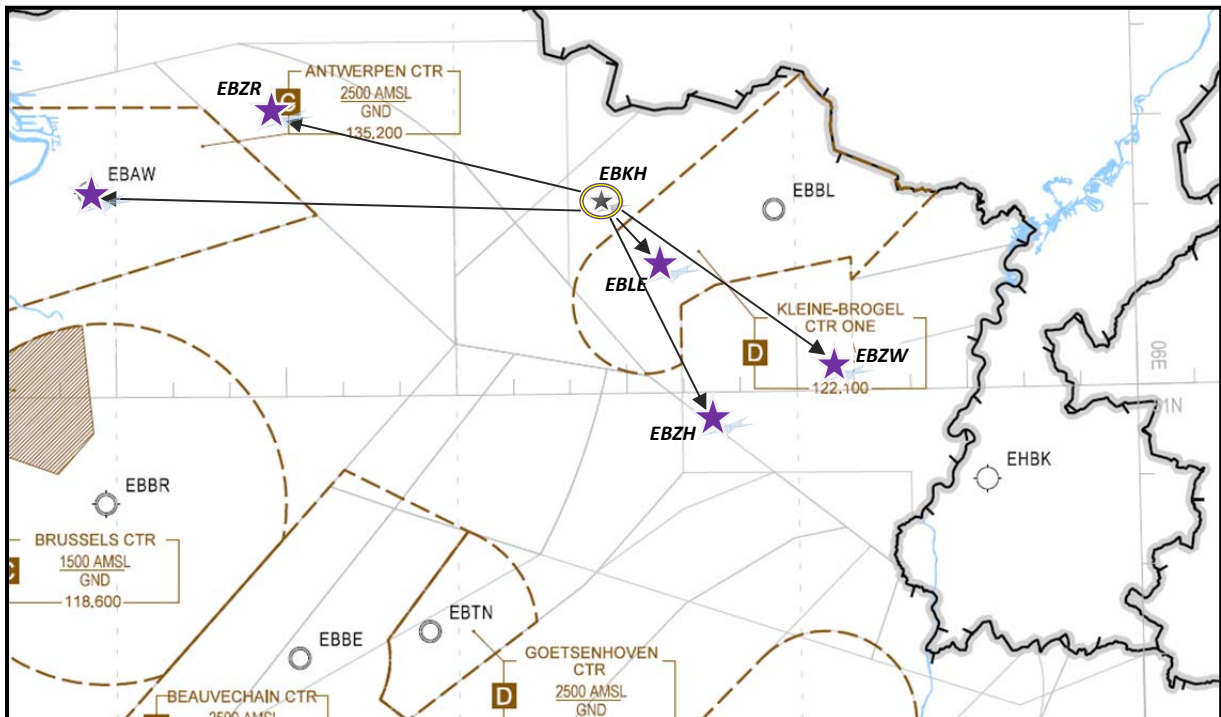
Traffic Circuit RWY 25



Traffic Circuit RWY 07



Alternate Aerodromes



1. EBLE: Leopoldsburg / Beverlo QDM 137°
 Elev: 207 ft
 RWY: 08 / 26
 AFIS: 125.525 MHz ("Beverlo Radio")

2. EBZH: Hasselt / Kiewit QDM 154°
 Elev: 141 ft
 RWY: 09 / 27
 AFIS: 118.325 MHz ("Hasselt Radio")

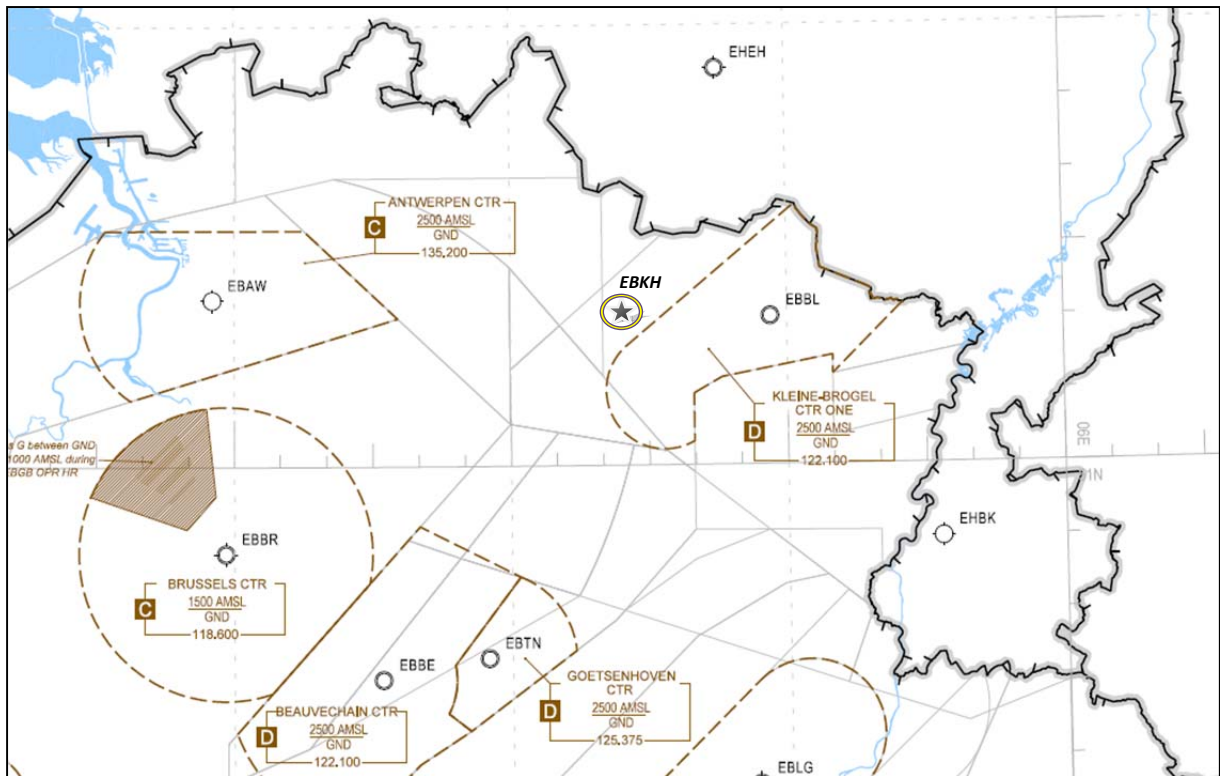
3. EBZW: Genk / Zwartberg QDM 130°
 Elev: 278 ft
 RWY: 03 / 21
 AFIS: 120.400 MHz ("Genk Radio")

4. EBZR: Zoersel / Oostmalle QDM 286°
 Elev: 53 ft
 RWY: 05 / 23
 AFIS: 123.800 MHz ("Zoersel Radio")

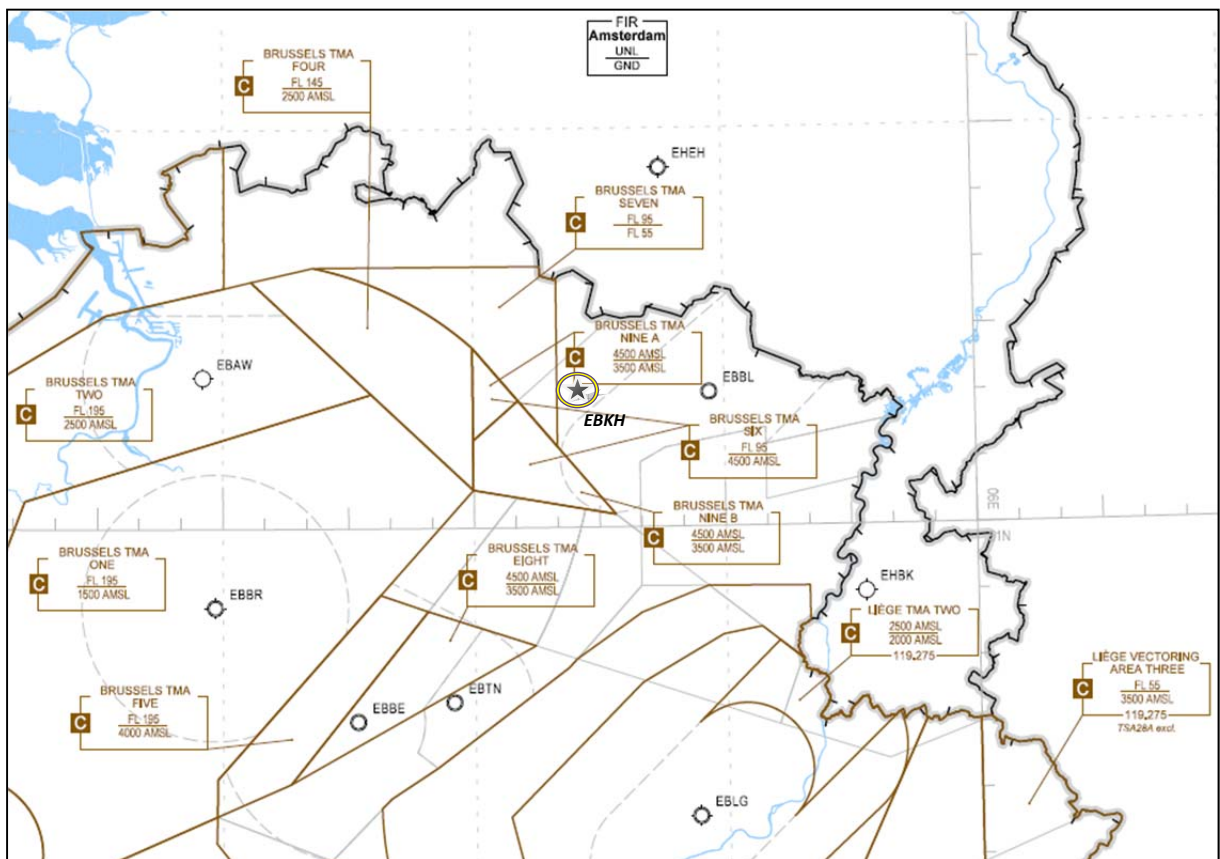
5. EBAW: Antwerp / Deurne QDM 272°
 Elev: 39 ft
 RWY: 11 / 29
 TWR: 135.200 MHz (GND: 121.900 MHz)

ILS CAT I equipped for Adverse Weather Diversion!

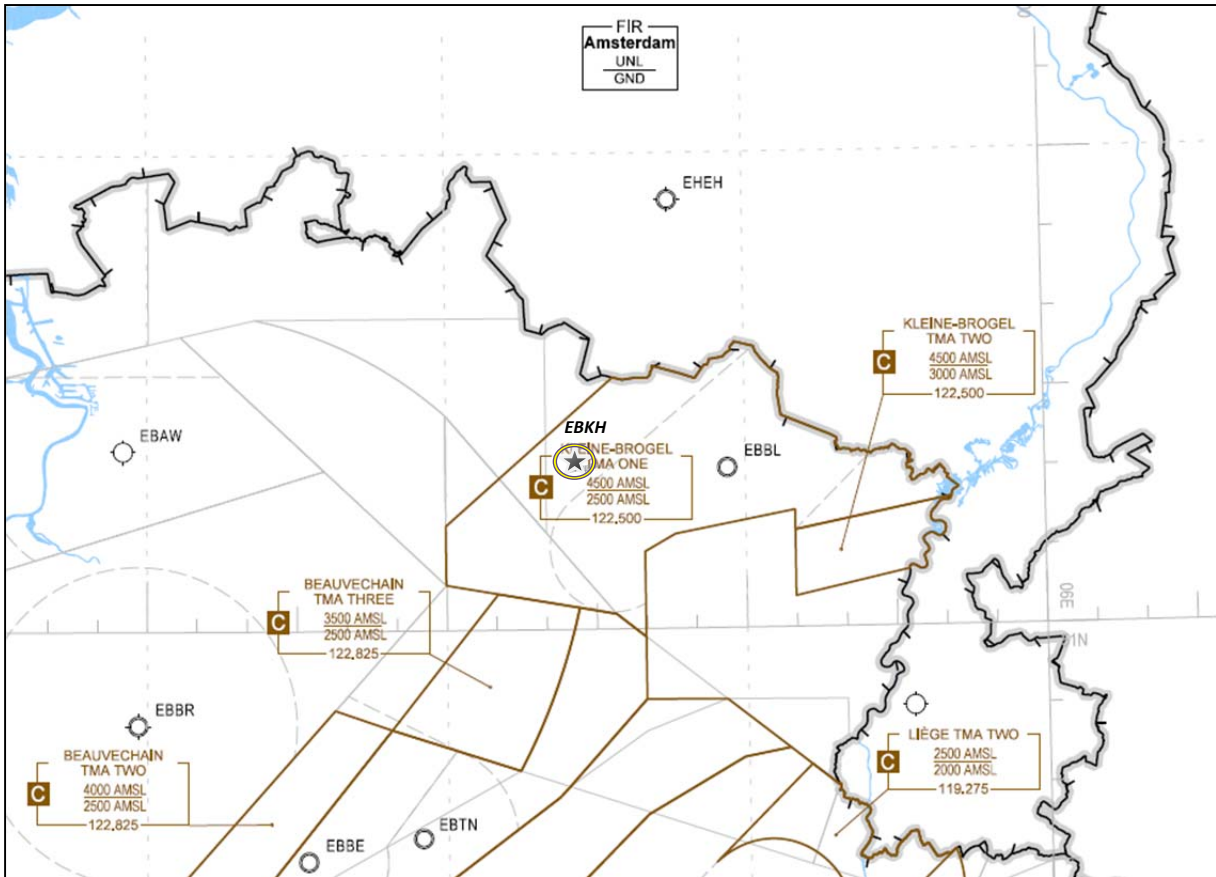
ATS Airspace: Civil CTR



ATS Airspace: Civil TMA



ATS Airspace: Military TMA



Prohibited, Restricted, Danger Areas

